

CANNING TECHNOLOGY

F400 SERIES

AUTOMATIC CAN SEAMERS



Groundbreaking – modular – cost-efficient

The F400 series of can seamers feature flexible, modular manufacturing processes that translate into tailor made and cost-efficient solutions for the food and can manufacturing industries.

The machines of the F400 series can be configured for 3 to 6 seaming stations and speed ranges from 60 to 600 cans/minute (low to mid-range capacities).

Concept / Design

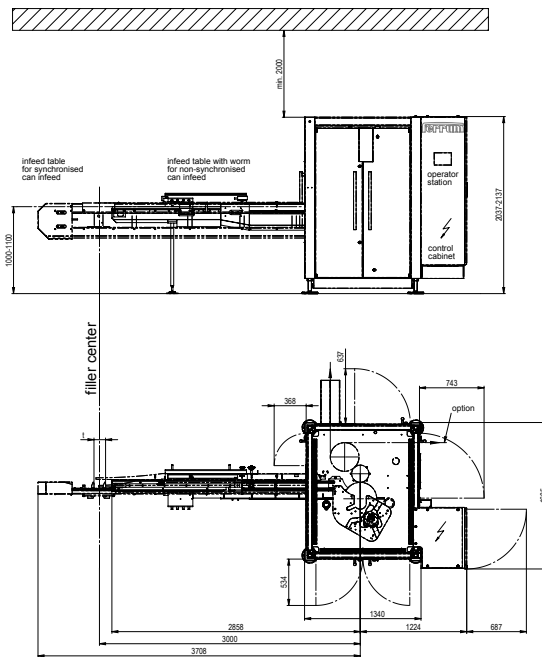
- Modular assembly and compact design
- Separate drives for seaming spindles from the actual machine
- Sophisticated sanitation system
- Automatic and loss-free oil lubrication system with integrated seaming roll lubrication
- Motorised height adjustment with digital display
- Seaming roll Easy Rider
- Stainless steel machine enclosure with built-in control cabinet
- The standard operator panel is integrated directly into the control cabinet
- Entire seaming area in stainless steel
- Large service doors and wide access openings

Options

- Electronic synchronisation of filler and seamer utilising servo motors
- Undercover steam injection
- Extended lid feed magazine
- WIP (Wash-In-Place) cleaning system with spray nozzles
- Flushing device
- Straight line infeed table for a synchronised operation
- Infeed table for can bodies for can manufacturing application
- Disengageable seaming cam 2nd OP (F405 / F406)
- Plunger type topper device for chain pitch 152,4 [6.00] and 161,9 mm [6.37]
- Casing for gastight application
- Lifting station with seaming plate drive break system
- Timed star wheel before infeed worm
- Operator panel free-standing
- Swiveling control desk

Benefits for the customer

- Increased accuracy for lightweight can and end applications
- Simple operation and cleaning
- Minimal maintenance requirements
- Maximum safety environment for machine operators
- Completely self-contained oil lubrication system eliminates the need for machine greasing
- Increased residual machine value through the use of corrosion-free materials
- Reduced spare parts inventory due to our use of standardised components
- Can discharge right-angled or parallel to can infeed
- Non-stop 24-h operation



Technical data

Model		F403	F404-T1	F404-T2	F405	F406
No. of seaming stations		3	4	4	5	6
Capacity	cans/min	60 - 270	80 - 360	80 - 360	100 - 500	120 - 600
Motor	kW	2.2 / 4.0	2.2 / 4.0	2.2 / 4.0	2.2 / 4.0	2.2 / 4.0
	[HP]	[3 / 5.5]	[3 / 5.5]	[3 / 5.5]	[3 / 5.5]	[3 / 5.5]
Can diameter	mm	50 - 100	50 - 100	99 - 154	50 - 99 (106)	50 - 100
		[200 - 315]	[200 - 315]	[315 - 601]	[200 - 314 (402)]	[200 - 315]
Can height (standard)	mm	56 - 200	56 - 200	56 - 200	56 - 200	56 - 200
		[204 - 714]	[204 - 714]	[204 - 714]	[204 - 714]	[204 - 714]
Can height (special)	mm	28 - 180	28 - 180	28 - 180	28 - 180	28 - 180
		[102 - 701]	[102 - 701]	[102 - 701]	[102 - 701]	[102 - 701]
	mm	100 - 250	100 - 250	100 - 250	100 - 250	100 - 250
		[315 - 913]	[315 - 913]	[315 - 913]	[315 - 913]	[315 - 913]
Chain pitch «t»	mm	190.5	152.4	209.5	152.4 / 161.9 / 171.5	133.4 / 142.9
	[inch]	[7.5]	[6.0]	[8.24]	[6.0 / 6.37 / 6.75]	[5.25 / 5.62]
Weight approx.	kg (netto)	2900	3000	3200	3300	3400
	[lbs (netto)]	[6400]	[6600]	[7100]	[7300]	[7500]

Technical changes are reserved.

Ferrum AG | Canning Technology

Industriestrasse 11 | 5503 Schafisheim | Schweiz
 T +41 62 889 13 11 | F +41 62 889 13 10
 conserven@ferrum.net | www.ferrum.net