

Ideal to ensure the quality of the final product and reduce both the number of jams along the line and rejects produced during the capping phase due to defective caps.

# Cap quality inspection



QT700-IoT Series [ VA ]

The cap inspection system is available in several configurations chosen according to the type of cap to be inspected and according to the type of line in such a way as to meet all the requirements of quality control.

## STANDARD INSPECTION

[depending on configurations]

- ✓ INTEGRATED IN CAP CHUTE  
(recommended for Flat cap, cap having an irregular upper surface such as sports caps-cap, etc.)
  - Product compliance
  - Up-side down cap
  - Ovalization
  - Security Ring defect/absence
  - Sealing ring defect/absence
  - Foreign objects
  - Brand inspection
  - Color inspection
- VACUUM CONVEYOR BELT [OPTIONAL Configuration]  
(1 or 2 additional side cameras)
  - Broken Ring
  - Defect in the bridges of the ring
  - Cap/Ring Shape defects
- Available the configuration integrated in the Arol "Flex" cap elevator
- ✓ ON TOP OF THE POCKET SORTER  
[recommended for ROPP cap or similar]
  - Product compliance
  - Up-side down cap
  - Ovalization
  - Spout presence/integrity

## FEATURES

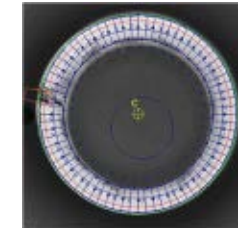
- ✓ Machine vision technology
- ✓ Extensible with additional inspection modules such as preform inspection, fill level and correct closure.
- ✓ Available the configuration integrated in the Arol "Flex" cap elevator

## ADVANTAGES

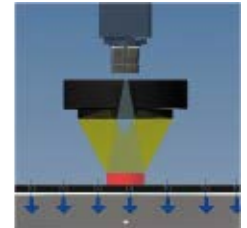
- ✓ IMPROVE PRODUCTIVITY
  - Reduction of the number of blow molder and filling machine damages and jams
  - Reduction of the number of filled product rejects
  - Reduction of the number of "line stop"
- ✓ IMPROVE QUALITY
  - Reduction of customer complaints related to product leak
  - Reduction of customer complaints related to foreign objects contamination
  - Ensure product quality

## TYPE OF CONTAINER

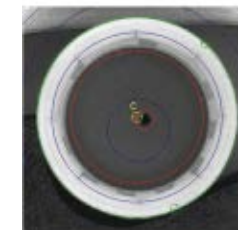
- ✓ Any kind of cap  
Configurable/expandable system, designed for maximum ease of customization



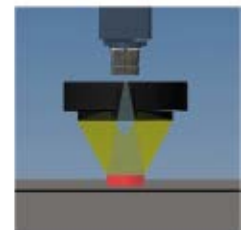
Broken ring



Principle - Vertical



Foreign object



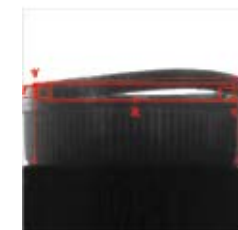
Principle - Vertical



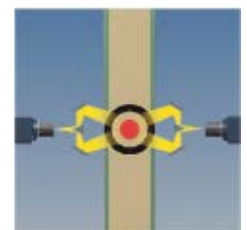
Deformation



Principle - On top of the pocket sorter



Broken ring



Principle - Lateral