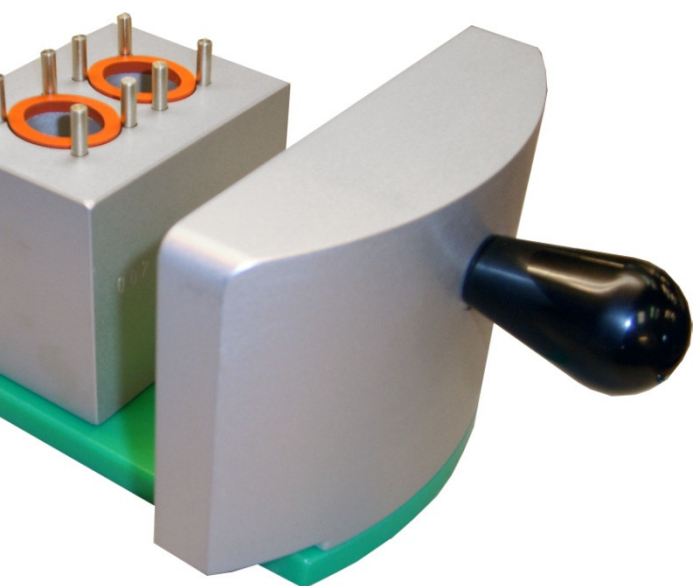


**Tommy Nielsen**



**Compact sealing generation**  
New standard for compact machinery



The Labseal is ideal for producing small batches of high quality sealed blisters in:

**Pharmaceutical Research and Development laboratories**

- Clinical trials
- Stability studies
- Package development
- Marketing samples
- Small production runs

TECHNICAL SPECIFICATIONS		
<i>Labseal</i>		
RUNNING SPEED MINIMUM		Depending on the filling speed and operator speed.
MACHINE DIMENSION	WIDTH	452 mm
	LENGTH	250 mm
	HEIGHT	429 mm
MACHINE WEIGHT		20 kg
ELECTRICAL CABINET WEIGHT		10 kg
TOOL DIMENSIONS	WIDTH	60 mm
	LENGTH	80 mm
	HEIGHT	65 mm
POWER SUPPLY INPUT		230V
PLUG ON THE MACHINE		Harting QHAN 17
PLUG ON THE ELECTRICAL CABINET		EU UNIVERSAL
AIR SUPPLY		5-6 bar
ENVIRONMENTAL NOISE LEVEL		Less than 75 dB
TEMPERATURE MAX.		180 C°
PRESSURE MAX.		5,5 bar