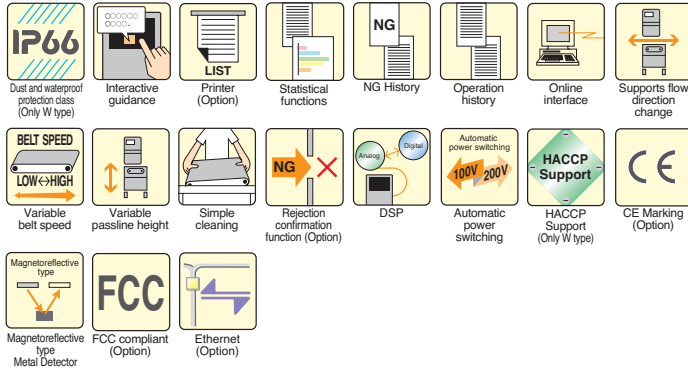


# Metal Detector

## KD8200AW/KD8220AW M Series

Especially for aluminum foil packaged products such as retort pouches and snack foods

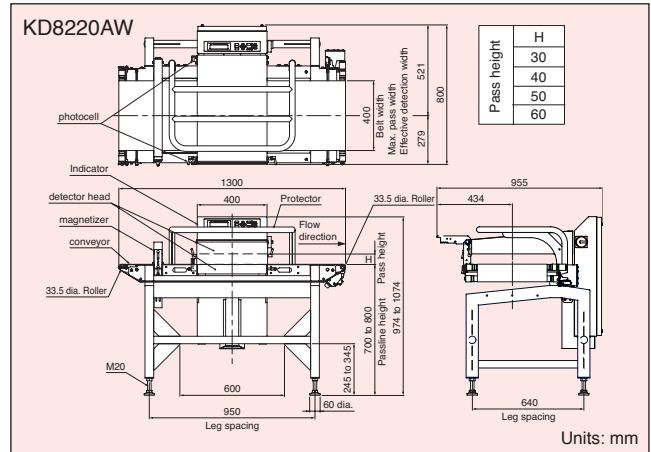
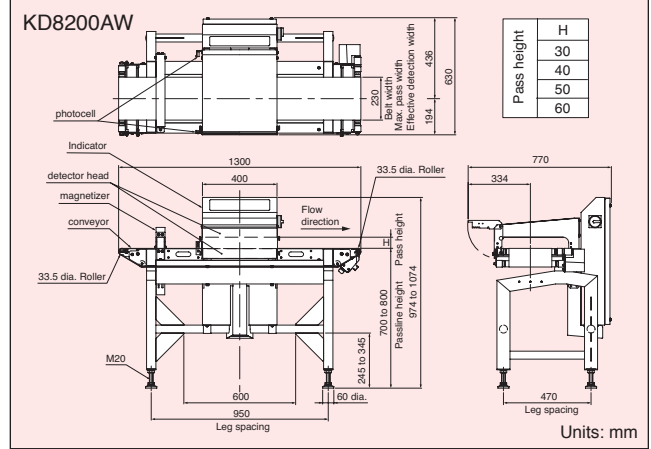


Note : Metals that exhibit magnetic properties such as iron and SUS430 and stainless steel processed by cutting and bending (placed under stress) such as SUS304 and SUS316 can be detected. Aluminum, brass, copper, silver, gold, lead, titanium, etc. cannot be detected because they cannot be magnetized.



KD8200AW

### External Dimensions



**!** This metal detector (MD) uses strong magnets so people with pacemakers, etc., (life-support devices) must not come near it, otherwise there is a risk of pacemaker malfunction.

### Specifications

Model	KD8200AW	KD8220AW
Pass height <sup>Note 1</sup>	30 mm, 40 mm, 50 mm, 60 mm	
Maximum pass width	230 mm	400 mm
Belt width	230 mm	400 mm
Display	STN LCD	
Operation method	Flat panel key	
Preset memory	Maximum 100	
Product packaging	Aluminum foil packaged products	
Belt speed	10 to 90 m/min (changeable)	10 to 40 m/min (changeable)
Maximum product weight <sup>Note 2 Note 3</sup>	70 m/min or less : 4 kg, 71 m/min or more : 3 kg	5 kg
Metal detection	Rejection signal output and beep, or belt stop and beep	
Power requirements	100 to 120 Vac +10% -15% or 200 to 240 Vac +10% -15%, single phase, 50/60 Hz, 200 VA, rush current 70 A (typ.) (20 ms or less)	
Mass	130 kg	160 kg
Environmental conditions	0° to 40°C, relative humidity 30% to 85%, non-condensing	
Protection class	IP66 compliance	
External finish	Stainless steel (SUS304)	

Note1: Pass height may be selected any one of them. Contact our sales representatives for change.  
 Note2: KD8200AW can support up to 8 kg as an option. However, the belt speed is 5 to 43 m/min.  
 KD8220AW can support up to 10 kg as an option. However, the belt speed is 5 to 20 m/min.  
 Note3: Sum total of checked product weight on the conveyor.